

# SKULL MASTER INSTRUCTIONS

## Important!

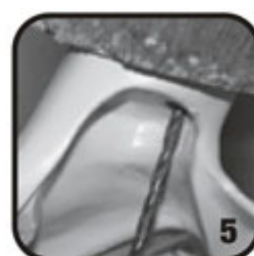
Measure the spread of your antlers prior to removing them from the skull plate. This will help you replicate the original spread later when you attach them to the reproduction skull. (Fig. 1)

## CONTENTS

- 1 reproduction elk skull bottom section
- 1 medium pedicle top section
- 1 large pedicle top section
- 4, 2½" #12 screws
- 3, ¾" #8 screws
- 3 tubes Gap Filler



1. Choose the appropriate size antler pedicle top section by measuring the circumference of your antlers just above the burr. The medium size is recommended for antlers up to 7 7/8", and the large will work best for any antlers 8" and larger. (Fig 2)
2. Cut each antler off flush at the burr. If you're using shed antlers, be sure there is no bone remaining below the burr. (Fig 3)
3. Test-fit the antlers on the top section by laying them on the pedicles. If they match your desired antler spread and lay flush against the pedicle, proceed to step 5. Otherwise, to adjust the spread of your antlers, go to step 4.
4. To change the angle that the antlers lay on the pedicles, remove material from each pedicle a little bit at a time. (Fig. 4) Sand, cut, or grind by hand or with a Dremel® tool in equal amounts per side until the desired angle is achieved.
5. Center one antler over the appropriate pedicle of the top section and drill a 3/16" hole about 2¼" deep into the antler base through the existing hole in the top section's pedicle. (Fig. 5)
6. Insert supplied screw (#12 x 2½") and tighten slightly. Do this just once, for now, on each antler.
7. Rotate the antlers into a natural position and tighten the screws. (Fig 6) A good rule of thumb when re-aligning the antlers is keep the brow tines parallel to each other and to the bridge of the nose. Reference your spread measurement from earlier.
8. Now drill and screw each antler again using the 2nd hole in each top section's pedicle.
9. Connect the antlered section to the base with supplied screws (#6 x 5/8") being careful not to over-tighten.
10. For a more permanent application or to fill any small gaps, apply a small amount of Gap Filler. After, smooth and clean any excess material.
11. Finish by installing a large headed nail or screw to the wall or a plaque. Hang using the keyhole on the back of the skull and enjoy for years. For another easy, more versatile way of hanging, check out Mountain Mike's Positioner™ for elk.



Finish-sand the area with 150-grit sandpaper to complete the re-shaping.

7

## TIP

### Reducing Pedicle Size

If the medium top section's pedicles are too large for your antlers, you can reduce their size by grinding with a drum sanding bit or a file. Remove material from outer edge of pedicle. Always remove equal material from each pedicle for a natural look. (Fig 7)

For tips & tricks and other great Mountain Mike's products, visit us online at:  
[masterofskulls.com](http://masterofskulls.com)

